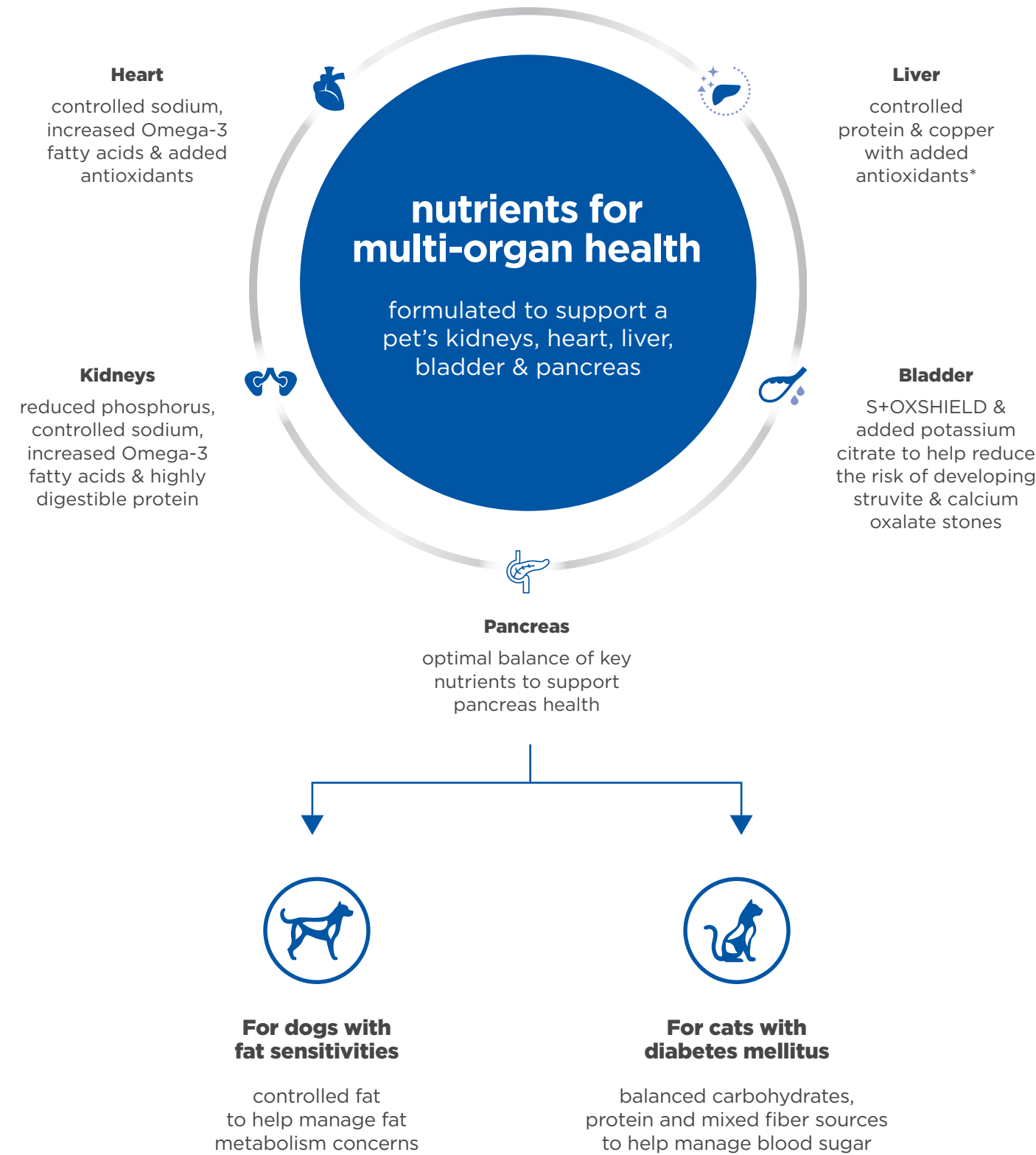


## one nutrition to support five organs



\*controlled copper for canine formula only

## solve the nutrition mystery for challenging cases



mystery solved.  
comfort found.



Find comfort in cracking the case of concurrent conditions with new Hill's Prescription Diet Multi-Organ — for multi-organ culprits.

SCIENCE  
DID THAT.



Visit [HillsVet.com/concurrent-conditions](https://HillsVet.com/concurrent-conditions) to see our concurrent condition portfolio



connecting the dots on concurrent cases

Hill’s Prescription Diet Multi-Organ offers breakthrough nutrition for pets with concurrent multi-organ conditions.

Concurrent conditions with conflicting nutritional needs can often require choosing which condition to prioritize. Prescription Diet Multi-Organ for canine or feline patients addresses more multi-organ conditions with less sacrifice — all from a single diet.



Suitable for dogs with any combination of:

- Fat sensitivities
- Renal disease
- Liver disease
- Heart disease
- Urinary issues



Suitable for cats with any combination of:

- Diabetes mellitus
- Renal disease
- Liver disease
- Heart disease
- Urinary issues

Canine Prescription Diet Multi-Organ



Feline Prescription Diet Multi-Organ



powerful nutrition for concurrent conditions



Helps manage systemic & renal hypertension with controlled sodium



Helps reduce inflammation & support multi-organ health with increased Omega-3 fatty acids



Helps minimize stress & workload on kidneys with reduced phosphorus & highly digestible protein



Activates the gut microbiome to help reduce uremic toxins with ActivBiome+ Kidney Defense



Formulated to promote a healthy urinary environment that reduces the risk of developing struvite & calcium oxalate crystals

complex support for canine patients

Feature	Multi-Organ	h/d	k/d	i/d	g/d	i/d low fat
ActivBiome+ Kidney Defense	✓	—	✓	—	—	—
Contains medium chain triglycerides	✓	—	—	—	—	—
Elevated B-vitamin levels	✓	✓	—	—	—	✓
Elevated essential amino acids	✓	—	✓	—	—	—
Contains proprietary blend of antioxidants	✓	—	—	—	—	—
S+OXSHIELD	✓	—	✓	✓	✓	✓

complex support for feline patients

Feature	Multi-Organ	k/d	w/d	m/d	Metabolic
ActivBiome+ Kidney Defense	✓	✓	—	—	—
Moderate to high in fiber	✓	—	✓	—	✓
Increased levels of B-complex vitamins	✓	✓	—	—	—
Elevated essential amino acids	✓	✓	—	✓	✓
S+OXSHIELD	✓	✓	✓	✓	✓